

Ealing Early Years Quality Partnership

Membership Guide 2024 / 2025



Children & Families

Contents

1. About the Ealing Early Years Quality Partnership.....	3
2. Standard Membership – Free for All Childcare Providers.....	5
3. Premium Membership – Open to All Childcare Providers.....	6
4. Testimonials of Premium Members	9
5. Range of Courses Available for Whole-Setting INSET	11
6. Training & Continuous Professional Development.....	13
7. Other Services – for New Providers.....	15
8. Terms and Conditions of Membership.....	15
9. Meet the Partnership Team.....	17

About the Ealing Early Years Quality Partnership

Our Vision

Our vision for our **Ealing Early Years Quality Partnership** is centred on:

- **Highly inspirational** early years education and leadership;
- Early years settings and schools' **collaboration, interdependence and connected autonomy**;
- **Unapologetically high** expectations, aspirations and educational outcomes for all, towards
- **Optimal and sustained impact** locally in Ealing, nationally and globally for; and by, **all** our Ealing:
 1. Children in early years
 2. Early years leadership (at all levels) within our early years settings and schools
 3. Early Years Consultants Team



Every Setting Matters

We feel very strongly that every early years provision matters; and is crucial in enabling our children's inspirational early years experiences and high outcomes. That is, whether you're just starting out, or if you're an established childminder, private day nursery, preschool or nursery / reception class, we value your contribution to highly inspirational early years provision within the London Borough of Ealing.

The **Ealing Early Years Quality Partnership** provides expert practical support for Ealing's early years registered childcare providers. The purpose of our specialist service is to create a supportive partnership with our providers and to work together towards a common goal to improve and enable high outcomes and close any achievement gaps for all our young children in Ealing.

Our Service: What We Do

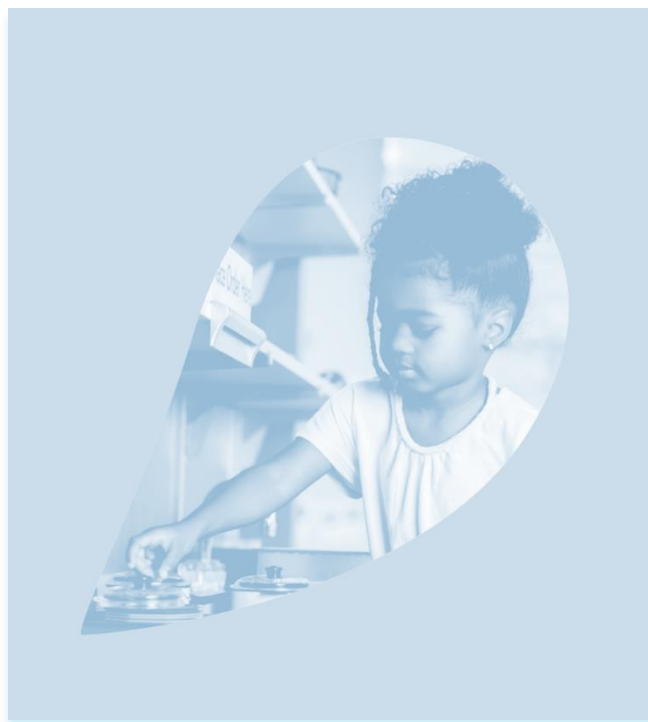
We offer expert early years advice, guidance, support, constructive feedback, information and local and national updates. This is provided via leaders' networks, training, visits, EYFS collaborative partnerships, etc. We also supportively-challenge you in your continuous quality improvement within your provision, to lead towards highly inspirational early years education and leadership for the children and families that your setting serves. This is built on mutual trust, respect, empowerment and relationship-building; and the individual's wellbeing is integral to the process.

Our Membership Options

We are extremely pleased to be able to continue to offer a universal level of basic support for all Ealing early years settings through the **standard membership** of our **Ealing Early Years Quality Partnership**.

In addition, our **premium membership** is for those early years leaders and settings, whose core purpose, and reason for being, is about enabling the very best possible experiences and outcomes for all our children and families that they serve.

Our **premium membership** offers a wealth of high-quality support, training and partnership opportunities for our early years providers who are committed to providing highly inspirational early years provision and would like to be supported to go on to the extra mile.



Standard Membership - Free for All Childcare Providers

With this membership, we will provide you with **access** to tools and information to enable you to work towards meeting the statutory requirements. This includes the following:

- Early years information, advice, support and guidance published on the Ealing Grid for Learning (EGFL) website www.egfl.org.uk.
- Access to Ealing's universal safeguarding training and Designated Safeguarding Leads Networks.
- Training and development for SEND and Inclusion Leaders.
- Termly Leaders Updates for Childminders, PVI Leaders and SEND Leaders
- Phone and email support for general enquiries.
- Visits and whole setting INSET training at standard rates
- Access to a range of universal resources via Padlets

Early Years Training & Consultant Visits for Standard Members

On the standard level membership – you can access our entire specialist early years training programme; whole setting training and the early years consultant visits we offer.

Standard Membership Training & Consultancy Rates for PVI Settings

Per Delegate

Half-day training (as advertised on Ealing CPD Online)*	£130
Full-day training (as advertised on Ealing CPD Online)*	£260

* or per part for multiple part courses

Per Setting

Half-day whole setting INSET training	£600
Half-day consultancy visit	£600

Standard Membership Training & Consultancy Rates for Childminders

Per Delegate

Half-day training (as advertised on Ealing CPD Online)	£65
Full-day training (as advertised on Ealing CPD Online)	£125
Half-day consultancy visit	£250

Premium Membership – Open to All Childcare Providers

Premium Membership

Please note, that as from September 2024, premium membership will be an automatic renewal process unless you inform us you wish to opt out of premium membership by emailing earlyyears@ealing.gov.uk by 31st August 2024.

**Ealing PVI settings: £260 per academic year
Ealing Childminders (including those registered with Childminder Agencies): £130 per academic year**

- **Second and additional Ealing sites receive a 15% discount)**
- **If a childminder employs more than one assistant and they wish for all of their assistants to access training, then they would be required to subscribe at the PVI setting rate.**

NB:

- *Membership prices will continue to be reviewed annually.*
- *Unfortunately, the Ealing Early Years Quality Partnership is currently **unable to accept subscriptions from out-of-borough** schools and early years settings (including PVI's and childminders).*
- *Agency childminders are advised to refer to the terms and conditions below.*
- *It is possible for childminders to arrange a payment plan, with Corporate Collections Payments Team, after they have received their invoice for the subscription fee.*

This is our premium membership package, intended for PVI settings and childminders who want to **go beyond the basic** statutory requirements; to provide **highly inspirational early years education and leadership**.

In addition, you will receive discounted rates for ALL of our training programmes and any additional consultancy not included in your package.

Named Early Years Consultant, Support & Empowerment

You will be assigned an experienced and highly skilled Early Years Consultant who will:

- provide **bespoke** visits (up to two visits a year for PVI settings, one visit a year for childminders) that are **tailored** to meet your individual setting's needs; with subsequent written feedback
- empower you in identifying areas of strength and those for continuous quality improvement re **highly inspirational** early years education and leadership
- equip you with **local partnerships** and tools to enable you to strengthen and continuously move your provision forward
- signpost you to **national and local early years updates**, advice, support and guidance – including that which is published on the Ealing Grid for Learning (EGFL) website

- provide you with a rich range of resources and training materials, via our Premium membership-only **Padlet links**, which are continuously updated
- be available by phone and email for advice and support throughout the year

Visits and Consultancy

- TWO half-days of consultancy for settings, by a highly skilled and experienced Early Years Consultant. Visits could be a combination of onsite and virtual, this can be agreed in discussion with your Early Years Consultant.
- *Equivalent value: £1,000 with Standard membership*
- ONE half-day of consultancy for childminders.
- *Equivalent value: £250 with Standard membership*

Training

- Access to Ealing's safeguarding training and Designated Safeguarding Leads meetings
- Free access to participate in race equity training for Ealing early years settings
- Half-price rates for specialist early years training
- Half-price rates for additional visits and whole setting training
- Bespoke and discounted training fees for paediatric first aid training

Leaders Networks

- Termly Childminder Networks (including learning and development training)
- Termly PVI Leaders Networks.
- Termly SEND Leaders Networks
- Area Leaders Networks (for nursery groups of 2+ settings) - *NEW*

Early Years Training & Consultant Visits for Premium Members

The majority of our training is free for premium members. Although, our paediatric first aid training is chargeable, as a premium member. You can access our entire specialist early years training programme, whole setting training and the early years consultant visits at half-price.

Premium Membership Specialist Training & Additional Consultancy Rates for PVI Settings

Per Delegate

Half-day training (as advertised on Ealing CPD-online)	£120	£60
Full-day training (as advertised on Ealing CPD-online)	£240	£120
Half day whole setting INSET training	£600	£300

Premium Membership Training & Consultancy Rates for Childminders

Half-day training (as advertised on Ealing CPD-online)	£60	£30
Full-day training (as advertised on Ealing CPD-online)	£120	£60
Half-day consultancy visit	£250	£125

**NB: Premium Settings & Childminders receive a bespoke and discounted training fee for paediatric first aid training*



Testimonials of Premium Members

“As a manager, it's very helpful to be able to receive advice and support from others and share back with my team.

Our Early Year Consultant has supported us on how we can improve our learning environment and adapt ways we can support the children and their families. This has given me the opportunity to support my staff to develop best practice. It has been helpful to have our Early Year Consultant come into our setting and have one on one time with me about ways we can develop.

My team has also benefited from the various training sessions, especially the whole setting training and I have seen improvements in how we provide for the children and families.”

Leader, Private Day Nursery

~~~~

*“I simply want to express how happy and grateful I am working with you and all the friendly Early Years professionals.*

*The Partnership has not only taught me substantial knowledge through endless training and meetings but also increased my confidence and expertise to proudly exercise my role as a childminder.*

*I am now more prepared for OFSTED inspections more than ever because of the support and will gladly recommend every childminder or Childcare provider to subscribe in order to benefit from great learning and teaching opportunities.*

*All the best to everyone”*

**Leader, Childminder**

~~~~

“We signed up with Ealing Early Years Quality Partnership for the first time at the beginning of this year. We are a fairly newly established setting, so the aim was to receive support in ensuring all was done to the highest possible standards.

In our Early Years Consultant and her team, we have found wonderful partners, knowledgeable and passionate, supportive and challenging at the same time.

The process we have gone through with them to improve our provision has been seamless. Our Early Years Consultant has been regularly in contact with us and is always full of ideas and suggestions. Through her, I met like-minded people in settings across the borough with whom we are going to stay in touch and visit each other's settings to ensure we always offer the best to our children.

We will continue to sign up for the Partnership because we feel it is the best support we can get and also the best value for money.”

Leader, Private Day Nursery

“Being a member of the Ealing Early Years Quality Partnership has really been valuable to myself and my setting. Subscribing to the partnership has enabled me to improve my setting in time for my Ofsted Inspection. The EYC visited my setting and made some valuable suggestions and gave me some targets to meet. Some of these included a mud kitchen and musical wall to encourage children to fully explore the outdoor garden environment. The EYC also suggested some training courses that were on offer, and I hope to undertake these courses during summer to enhance myself professionally”.

Leader, Childminder

~~~~

*“The Ealing No Learner Left Behind Project (Black Caribbean Achievement / race equity) has been a privilege to be a part of. All staff are better informed about the longstanding attainment gap of Black Caribbean Children in Ealing.*

*The training has opened up many conversations about bias and injustice and given space to talk and things about equality and equity. We can only move forward once we face our own biases.*

*It is a big-time commitment to engage in the volume of training that is involved but I now realise that is only because of the time and commitment invested in attending all the training that the conversations about making change can be kept in the forefront and begin to make a difference.*

*The impact of the project can be best summed up by a comment made by a parent:*

*“Think you for taking the time to talk to us about this. I have realised that I have my own ‘backpack’ filled with all kinds of emotions about all the struggles I have faced and that you can’t fix. I realize now that these are things I have to deal with. I have also realised that your setting is doing all it can to change my children’s ‘backpack’ and make their learning journey a better one.”*

*A parent also remarked that by having included ‘pretty black dolls’ the play resources have already made a world of difference”.*

**Middle Leader, Nursery School**

~~~~

“On Wednesday when you came, we joked about how lucky we had been with finding staff - you said someone from above was looking down on us. I feel joining the Partnership was one step guided from above too.

Such an inspiring (PVI Leaders Briefing) meeting this morning. Thank you and the whole team”.

Leader, Private Day Nursery

Range of Courses Available for Whole-Setting INSET Training

To support whole-setting development and reflective practice, training courses selected from the list below can be delivered for your whole staff team as part of an INSET day. You will be charged at either the standard or premium membership rate as outlined in our brochure depending on your chosen membership level.

Dependent upon the current Public Health England and Government guidance re: COVID-19, in discussion with your EYC, courses may be adapted to be delivered remotely via Microsoft teams.

INSETs are limited to a maximum of TWO per setting over the year and must be booked in consultation with an Early Years Consultant.

All bespoke INSET training will be provided half-day

- Circle Times and Objective-led Play
- Communication and Language
- Developing an Effective Team
- Expressive Arts & Design
- Introduction to SEND
- Mathematics in the EYFS
- Physical Development
- Personal, Social and Emotional Development
- Prime Areas of Learning
- The Uniqueness of Outdoors
- The Emotional Environment
- Writing in the EYFS



Training & Continuous Professional Development

The following courses, as advertised within our **EYFS Training Programme 2024-2025**, will continue to be available for booking via Ealing CPD Online and others may be added over the year dependent on local needs and national requirements.

(Subject to a minimum of **10 delegates** required for each course to go ahead).

You will be charged at either the standard or premium membership rate as outlined in our brochure depending on your chosen membership level.

The following courses are **delivered by the Ealing Early Years Quality Partnership and / or Ealing Early Years Service:**

Leadership & Management Training

- Leadership and Management Workshops
- Leadership training will be delivered via the various early years Leaders Networks across the year.

Welfare & Safeguarding Requirements Training

- Paediatric First Aid
- Early Help Assessment and Plan
- Introduction to Safeguarding
- Safeguarding Refresher
- Designated Safeguarding Leads Training
- Safer Recruitment Training

Quality First Teaching - EYFS E-Learning Webinar Courses ***NEW***

Spring 2025

- Highly Aspirational Leadership
- An Introduction to Neurodiversity in the Early Years
- Parent Collaboration in SEND
- Environments that Enable
- The Prime Areas of Development
- Building Blocks of Behaviour
- Staff Wellbeing

Future Courses

- Environments that Enable (outdoors)
- Circle, Story and Carpet time
- Expressive Arts & Design and Understanding the World
- Strengths Led Goal Setting for SEND
- Play and Neurodiversity
- The Four Broad Areas of Need

EYFSP Moderation Training & Cluster – non-statutory (NB: applicable for the moderation of statutory 2-Year-Old Progress Check Judgments)

- EYFSP Moderation Training
- EYFSP Moderation Cluster Meeting

Race Equity Training - *NEW*

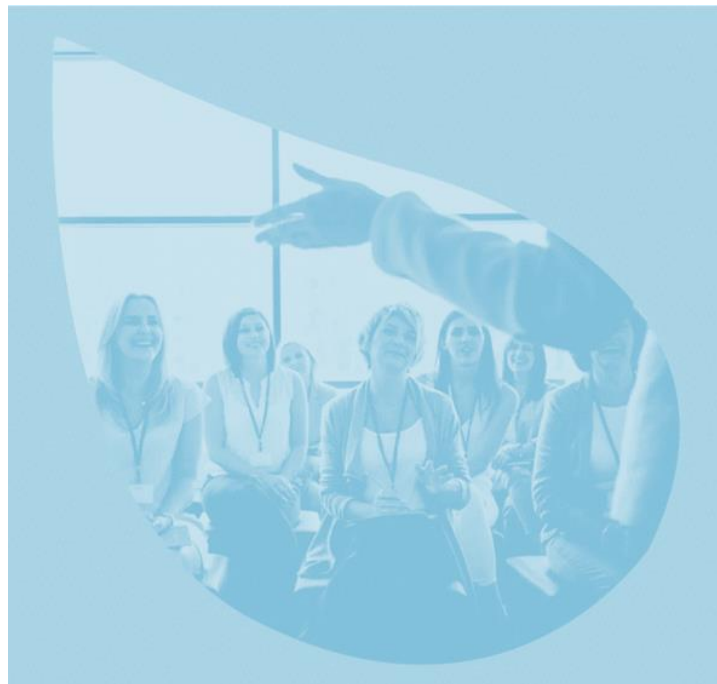
- Challenging Disproportionality & Developing Cultural Competence
- Race Equality in the Primary Curriculum
- Dealing with Racist Incidences Effectively
- Inclusive Recruitment and Retention (senior leaders)

Special Educational Needs & Disability Training

- SEND Leadership Training

Other Partners who Deliver Training for Early Years Settings

- Early Start SEND and Inclusion
- Occupational Therapy
- Oral Health
- Parent Partnerships: Family School Partnership Award
- Speech and Language Therapy



Other Services – For New Providers

Specialist Service for New Early Years Settings (£260 one-off payment for PVI settings and £130 one-off payment for Childminders)

For new settings **with premises**, working towards Ofsted registration - we offer tailored support to ensure that you have everything you need to get you off to a flying start.

One of our experienced consultants will arrange two visits to your setting working with you to ensure you meet your statutory requirements of the Early Years Foundation Stage (EYFS). You will receive written feedback and agreed actions.

First visit: your consultant will support and advise you in carrying out a welfare audit and offer focussed support with any areas where there is a need for development; to get you ready to open your doors and welcome children and their families.

Second visit: the focus will be on teaching, learning, leadership and management. Your consultant will accompany you around your provision and then advise and support you in planning priorities that will enhance the quality of your learning environment; and will guide you regarding high quality early years education and leadership.

Terms & Conditions of Membership

As part of the contingency plan to continue to provide support throughout and following the COVID-19 pandemic, in line with local and national guidance and your own risk assessments, your EYC will work with you to agree how your support visits and training will be delivered. This could include socially distanced visits, phone-based support or online visits / training via Microsoft Teams.

- **Membership** will operate on an annual basis from Sept 2024 to Aug 2025 (deadline to return application form by: **Tuesday 30th July 2024**). Newly Ofsted registered settings can book membership 'in year' within one year of their Ofsted registration date and will be charged a proportion of the cost dependent on registration date. However, all other settings will be charged the full annual rate irrespective of the start of their subscription date.
- **Rolling membership** – Please note, that as from September 2024, premium membership will be an automatic renewal process unless you inform us that you wish to opt out of premium membership by emailing earlyyears@ealing.gov.uk **by 31st August 2024**
- **To inform us as partnership working**, it is an expectation that you need to inform us of any changes within your leadership team. This will help us to maintain our records and provide support where relevant.
- **Visits (setting based or remote)** will be arranged with your allocated Early Years Consultant (EYC). Visits cannot be carried over into the next year. All time allocated will include meetings, research, preparation and delivery. It is likely that there will be peak times when demand for support is high. Please make bookings in advance as much as

possible. Once booked cancelled visits may not be able to be re-arranged, this will depend on the availability and capacity of the EYC.

- **Training courses and INSET**

Annual subscription must be paid in full before settings can access subsidised training. One full week inclusive of 5 working days must be given if settings cancel bespoke INSET training or payment will be required in full.

Four full working days' notice must be given for the cancellation of training courses delivered at the Ealing Education Centre (EEC) or other council venues or payment will be required in full.

Four full working days is required for the cancellation of safeguarding courses. Otherwise, a non-attendance fee of £50 will be payable for each confirmed delegate.

- **Training materials and PowerPoint presentations** shared with settings, in order to cascade to the rest of their staff team to enhance and strengthen practice, remains the property of Ealing Early Years Quality Partnership. Therefore, the content and / or presentation must not be copied or edited in any shape or form or transferred to any other parties beyond that particular setting.
- **Agency Childminders** can subscribe to the 'Premium Package' of the Ealing Early Years Quality Partnership and:
 - can attend training provided by the Ealing Early Years Quality Partnership (any chargeable courses will be invoiced directly to the childminder)
 - can receive one online 'visit' per year which is centred on the outcomes of, or queries related to, any of their training attended
 - and will be advised to liaise directly with their relevant childminder agency if any other queries arise during the online 'visit' that are not linked specifically to their training attended
 - any further support required or concerns identified will be shared with the relevant childminder agency
- **Quality Assurance** - the quality of our service will be regularly monitored and evaluated, and settings/providers will be asked to give feedback.
- **Payment** - by signing the application form, the childcare provider agrees to purchase and pay for the annual membership package. An invoice will be issued to each provider by **October 2024** (half-term) and should be paid promptly by **31st December 2024**. Payment must be made in full before settings can access training and bespoke support visits at the membership rates.
- **Non-Payment** - In the event of non-payment by 31st December 2024, the setting's debt will be referred to the Debt Collection team / agency, thereafter.
- **Scheduled Visits** - Please be aware that there may be occasions where Early Years Consultants might need to reschedule or postpone visits due to unforeseen circumstances and will inform settings at the earliest opportunity. Similarly, it is understood there may be occasions where settings need to reschedule their visit and it is requested, that they inform their assigned Early Years Consultant at the earliest opportunity.
- **Code of Conduct** - In accordance with the local authority's conditions for early years settings, those settings that are abusive or obstructive to the early years team are at risk of:
 - being referred to the Ealing Early Years Settings Review Group
 - removal from the Ealing Family Services Directory
- **Complaints Procedure** - Should a childcare provider have concerns about the quality of the service provided; the provider is advised to try to resolve the matter with the Early Years Consultant in the first instance. Where this does not resolve the matter, providers should contact the Principal EYFS Adviser/Quality Lead, Samira John-Bailey, sjohnbailey@ealing.gov.uk
- **The Premium Membership Stamp** - Once your membership is confirmed, you will be sent a Premium Membership Stamp which is a logo that we'd like you to use on your website and publicity materials online and in print. You may also use it on your headed paper. This tells parents that you have subscribed to a higher level of membership with our team with the intention of providing a highly inspirational service.



Meet the Partnership Team

We will empower you to provide highly inspirational early years education and leadership, for the children and families you serve; and to help you support each child to become the very best they can be.

If you'd like to discuss the work of the **Ealing Early Years Quality Partnership** and any of the services we offer, please get in touch.



Samira John-Bailey
Principal EYFS Adviser /
Quality Lead
sjohnbailey@ealing.gov.uk

Areas of interest:
High expectations, aspirations and outcomes for all children, families, staff and communities; race equity; leadership and management; quality of teaching and learning across all 7 areas of learning and development.



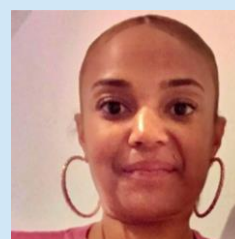
June Ryan
Early Years Administrator
jryan@ealing.gov.uk
020 8825 5696

Support role:
June can assist you with any queries that you may have relating to the Ealing Early Years Quality Partnership, from funding to consultancy visits.



Lizzie Huggett (nee Ross)
Early Years Consultant
lross@ealing.gov.uk

Areas of interest:
Developing inspirational leadership and management to consistently empower teams to review and build upon practice to improve outcomes for all children.



Natasha Henry
Early Years Consultant
henryn@ealing.gov.uk

Areas of interest:
Quality of teaching and learning in the early years, building meaningful relationships (with parents) to enable effective working partnerships with a special focus on supporting fathers. High quality provision in home-based settings.



Gwendolyn Andrews
Early Years Consultant
AndrewsG@ealing.gov.uk

Areas of interest:
Inspiring the early years workforce through building passionate and forward-thinking leadership to provide each and every child with the best possible start in life.



Begoña Toral Moratinos
Early Years Consultant
ToralMoratinosB@ealing.gov.uk

Areas of Interest:
Neuroscience, inclusion, equity, and multiculturalism. Passion to promote early years leadership in early years settings and further education colleges, in Ealing and beyond.



Sukhvir Kang
Early Years Training and
Development Administrator
skang@ealing.gov.uk
020 8825 9761

Support role:
Sukhvir can assist you with any queries that you may have relating to training and development; bookings on Ealing CPD Online or finding the training you need.

Ealing CPD Online: <https://ealingcpd.org.uk>
Ealing Grid for Learning: www.eqfl.org.uk
Email: earlyyears@ealing.gov.uk

Ealing Early Years Quality Partnership

Perceval House

14-16 Uxbridge Road

Ealing W5 2HL

earlyyearsservices@ealing.gov.uk