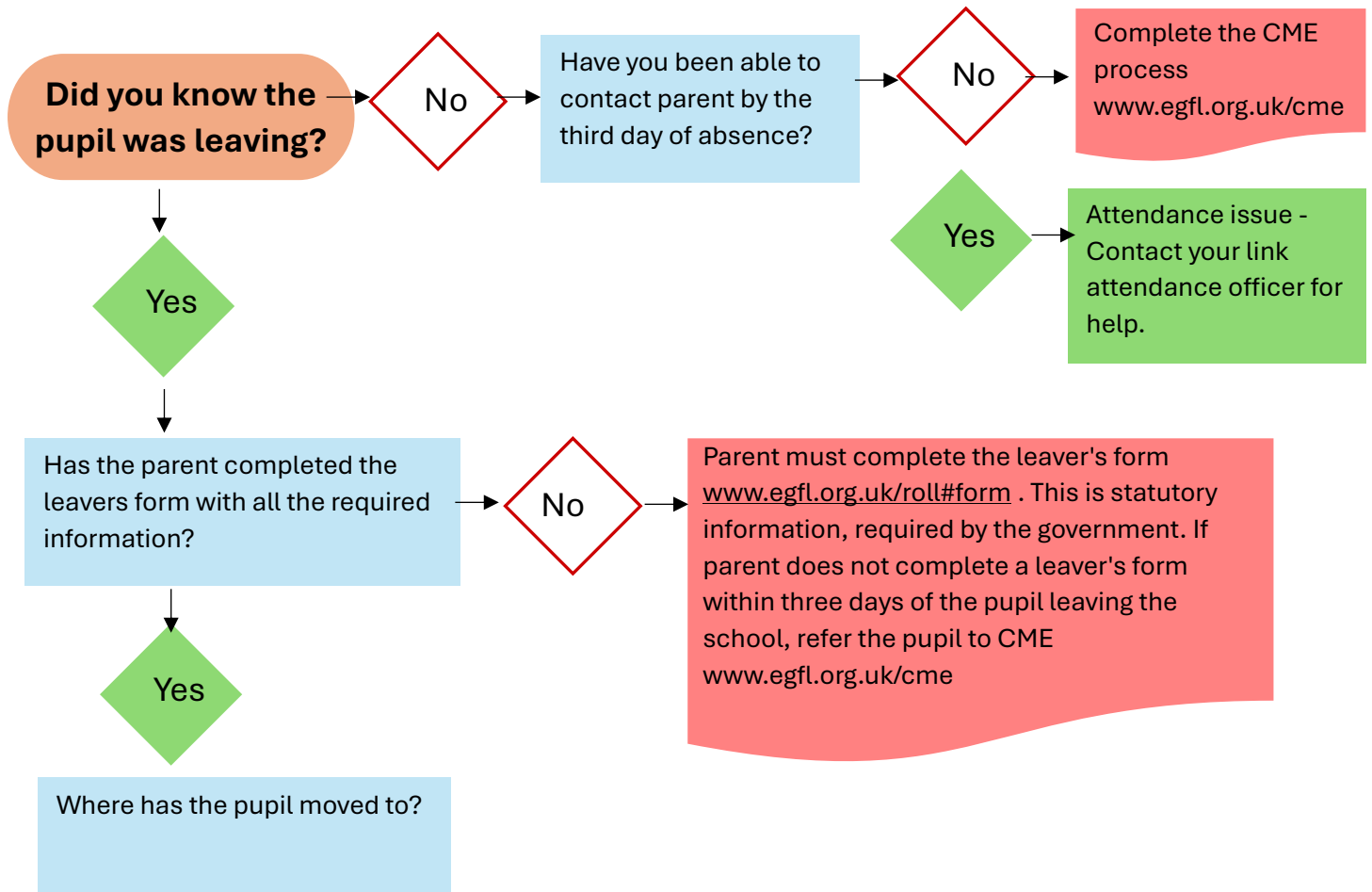


When can I remove a pupil from roll?

October 2024



Abroad If the parent confirms in writing that the pupil is moving abroad and not returning to the UK, you can remove them from roll immediately. The required information must be collected within ten school days. You must refer the pupil to CME if you do not have required information. www.egfl.org.uk/cme

Has not moved or is still close enough to travel to current school. Pupil should not be removed from roll and should continue to attend until they are admitted to a new school.
This is an attendance issue. Contact your link attendance officer for help.

Still lives in Ealing but has been withdrawn to be electively home educated If the pupil has been withdrawn to be home educated, refer them to Ben Lundy, blundy@ealing.gov.uk,) and Debby Legg, dlegg@ealing.gov.uk in the elective home education team using the forms at www.egfl.org.uk/ehe

Has moved within the UK, but too far to continue travelling to current school You can take them off roll once you have confirmation that they have applied for a new school place at new local authority or county council. Parent to send you confirmation of this (a forwarded confirmation email or screenshot) or contact the admissions team in their new local authority or county council. If you are unable to confirm whether the parent has applied within ten school days and making reasonable enquiries, please refer them to CME. www.egfl.org.uk/cme

1) The pupil's new address, the details of their new school and the name and contact details of the parent the child will be living with are a statutory requirement. This information must be sent to us for every leaver, via a Gateway notification before the pupil is removed from roll on your MIS, or via the weekly Leavers and Joiners returns if this is not possible.

If the child will not be living with a parent, please ensure you record the details of the adult they will be living with, and check whether this constitutes a private fostering arrangement. You should confirm the child was admitted to their new school, and it is best practice to request copies of the travel documents for every child who is leaving the UK to live abroad. If you are unable to obtain the statutory information, or confirmation that the child has been enrolled at their new school, please refer them to CME www.egfl.org.uk/cme

2) A leaver's form can be found at www.egfl.org.uk/roll#form. If you use your own leaver's form, please make sure it contains the same fields/information.

3) The reasonable enquiry form and an explanation of the CME process can be found at www.egfl.org.uk/cme

4) The DfE states this is a maximum travelling time of 75 minutes. For further information please see Travel to school for children of compulsory school age. In Ealing we suggest a 30-minute travel time for primary school pupils. However, each case should be considered individually depending on the family circumstances and difficulty of the journey.

5) The forms for referring a pupil who has been withdrawn to be home educated to the relevant team can be found on EGFL via the link below:

Templates to support off-rolling process for elective home education (EHE) | Ealing Grid for Learning (egfl.org.uk)

Pupils with EHCPs

Children with EHCP's in a special school, cannot be removed from roll without the permission from the Ealing SEN team, except in the case of pupils abroad on extended, unauthorised leave abroad where the process has been completed and permission has been given by your link attendance officer/the CME Officer. For further information please see [EGFL](#).

Until the pupil has been allocated a new provision by their new Local Authority they must remain on your roll, as your school will remain the named provision. This is the case for all pupils with EHCPs. Your school is responsible for safeguarding while pupil remains on your roll.

Regular contact with both the parents and the child is recommended (video calls are best wherever possible). It is also advisable to contact the SEN team in the pupil's new Local Authority as soon as possible to request an estimate on how long their consultation process may take, and what resources they can provide in the meantime to help you meet the requirements of the pupil's EHCP while you remain their named provision.

Can they provide transport to and from the school if it is not too far? Is there equipment they can provide (wobble cushions, laptops etc.) that are appropriate? Will they provide access to outside therapies specified in the EHCP until the pupil is allocated a new school place?

All pupils with an EHCP who are being withdrawn to be Home Educated, must have the approval of the SEN team. Please contact the pupil's SEN Coordinator (EHCCo) to let them know.

Pupils who have a Social Worker

Please ensure that the Social Worker of any leaver who has one is informed before they are removed from roll. Your school's Designated Safeguarding Lead will have a list of all the pupils in your school that have a Social Worker.

Pupils who are CLA

Where a CLA (Child Looked After) child or young person has been placed out of borough long term, and will not be returning to your school, but has not yet been placed please contact their Virtual School teacher for permission to remove them from roll. This only applies if the pupil does not also have an EHCP.

If the pupil also has an EHCP their Social Worker should be in contact with the SEND Team in their new Local Authority to ensure a new provision is allocated. Please contact them for progress during this process.