

EALING PRIMARY SCHOOL SENCO NETWORK

SEND and Inclusion Strategy 2014 - 2018

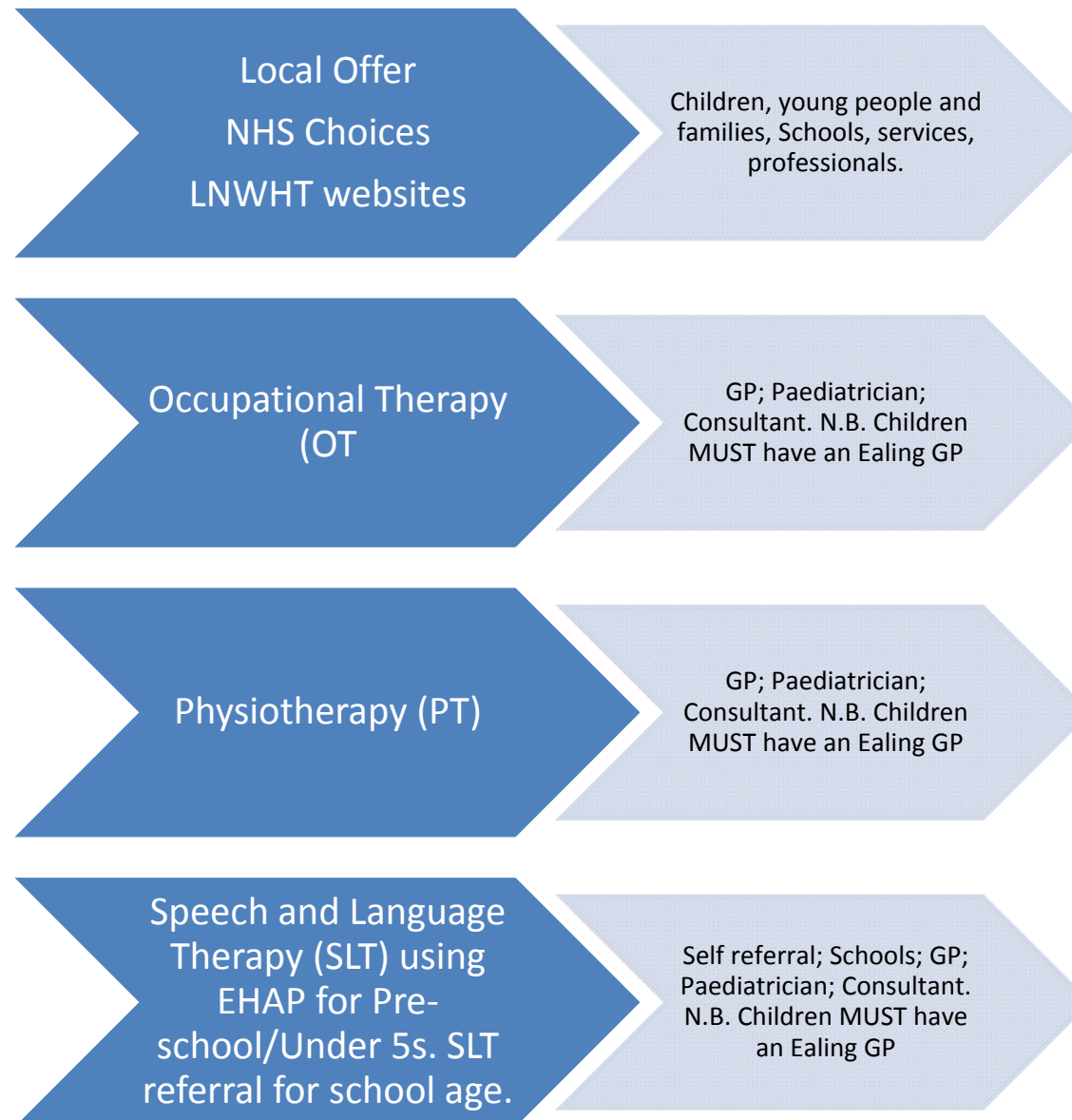
- Young people to be included in all aspects of their lives, enjoy the experience and achieve well
- Improve outcomes for children and young people with SEND and their families
- Better prepare young people for adulthood and employment
- Address the gaps in the quality of provision and progression pathways for children & young people with SEND to secure the very best inclusive practice

CHILDREN'S & ADULTS' SERVICES

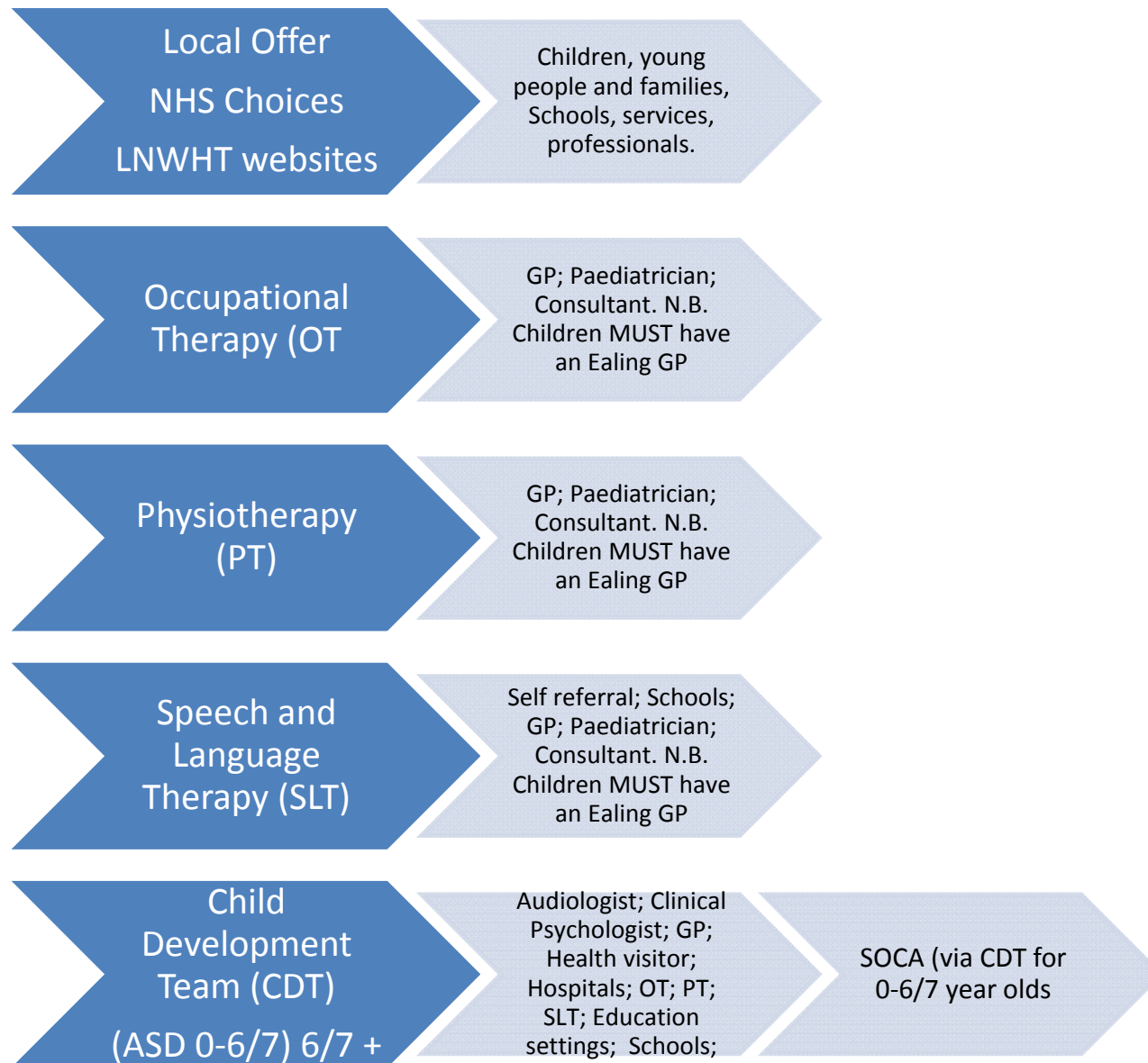
2015

EDUCATION, HEALTH & CARE REFERRAL PATHWAYS

Ealing Referral Pathways – Health



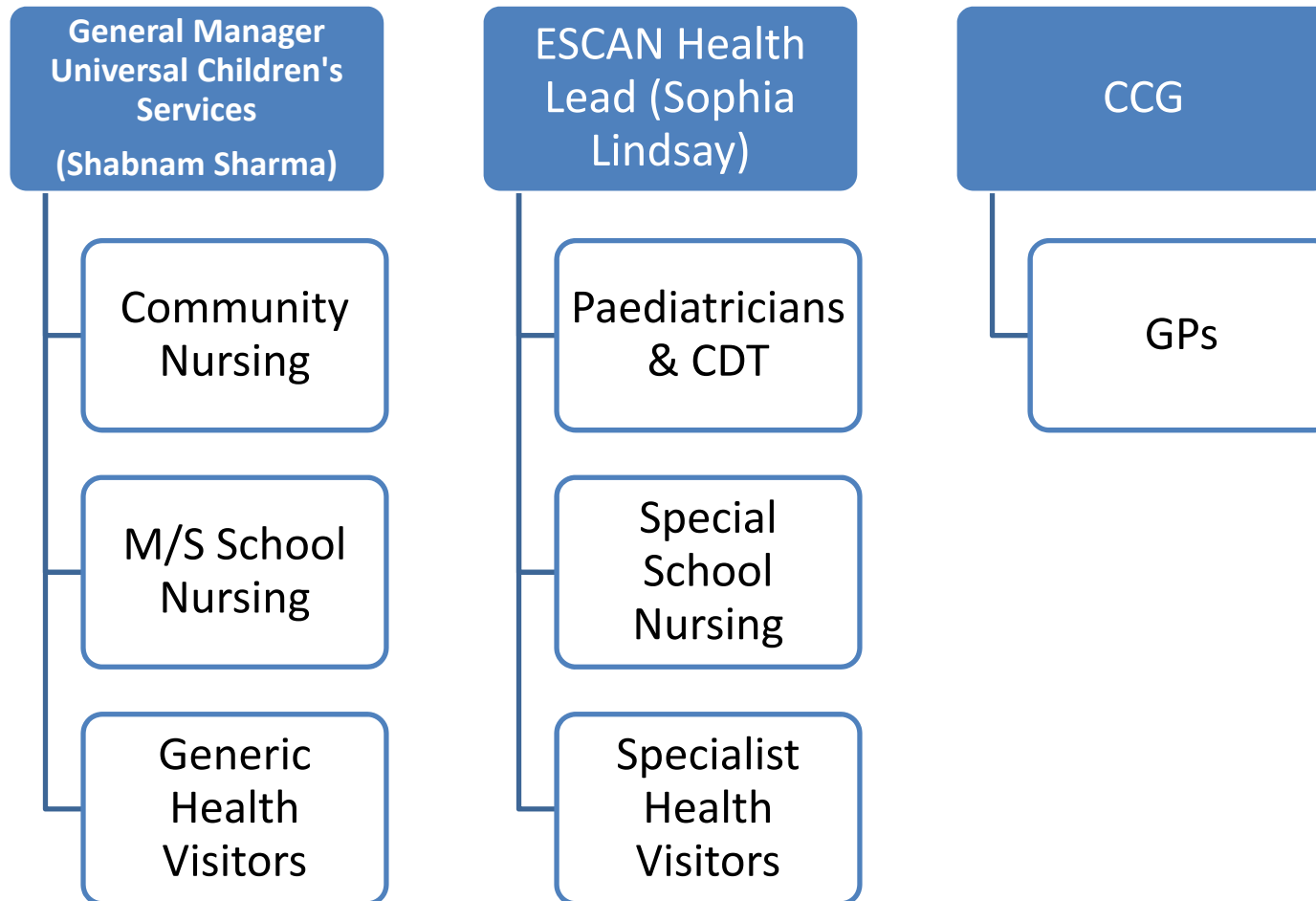
Ealing Referral Pathways – Health



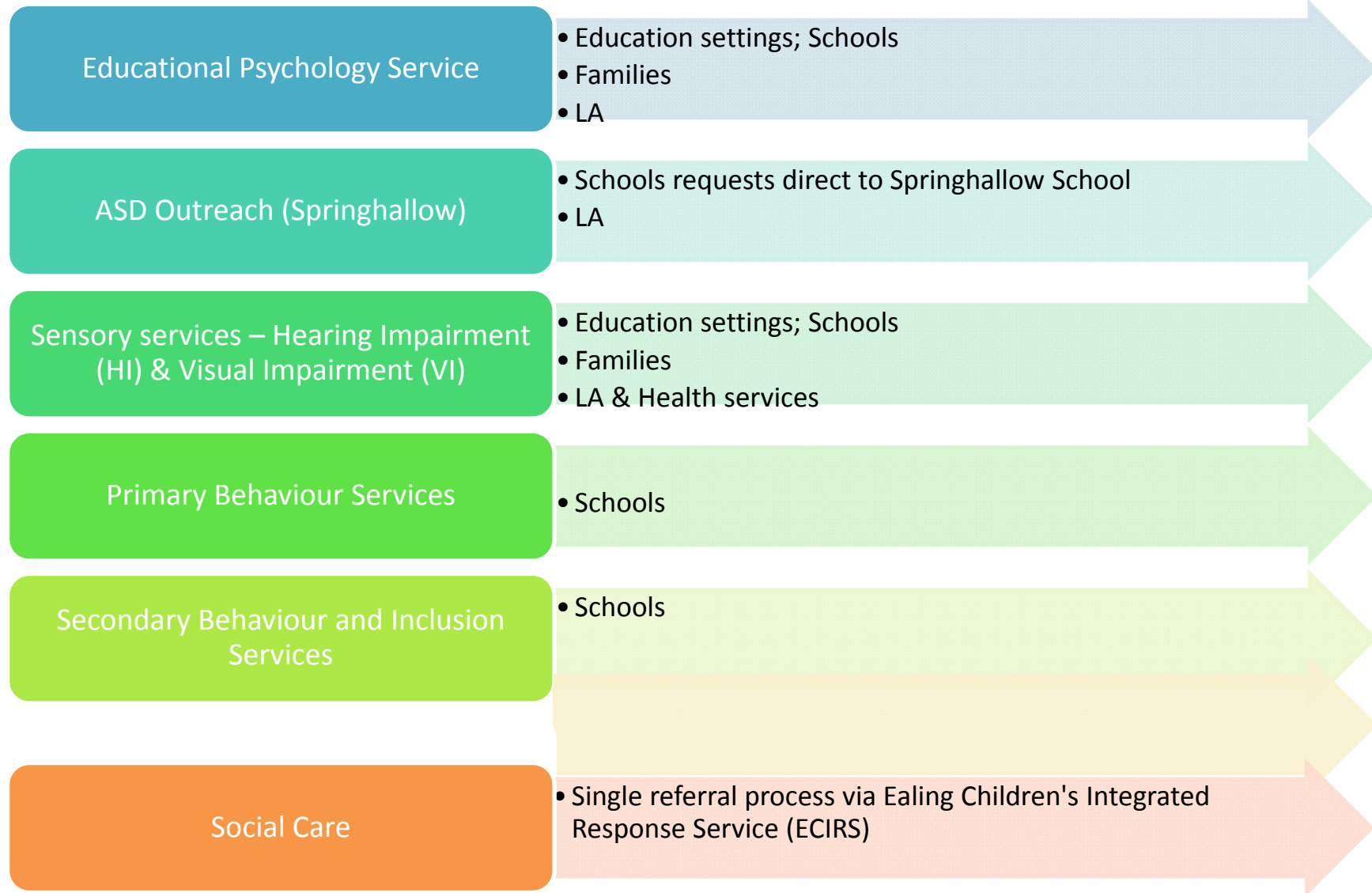
Ealing Health visitor & School Nurses Contacts

Central Ealing and Hanwell	Mattock Lane Health Centre Ealing W13 9SX	HV's 0208 383 5733 SN's 0208 3838756
Acton	Acton Health Centre 35-61 Church Road, Acton W3 8QE	HV's 0208 383 8748 SN's 0208 3838756
Northolt and Greenford	Grand Union Health Centre Taywood Road, , Northolt UB5 6WL	HV's 0208 313 7519 SN's 0208 33137518
Southall	Jubilee Gardens Health Centre, Southall UB1 2TJ	HV's 0203 313 7831 SN's 0203 3137886
Special School Nursing Team Leader	Carmelita House, 21-22 The Mall, Ealing W5 2PJ	0208 8258343
Specialist Health Visitors	Carmelita House, 21-22 The Mall, Ealing W5 2PJ	0208 8258710

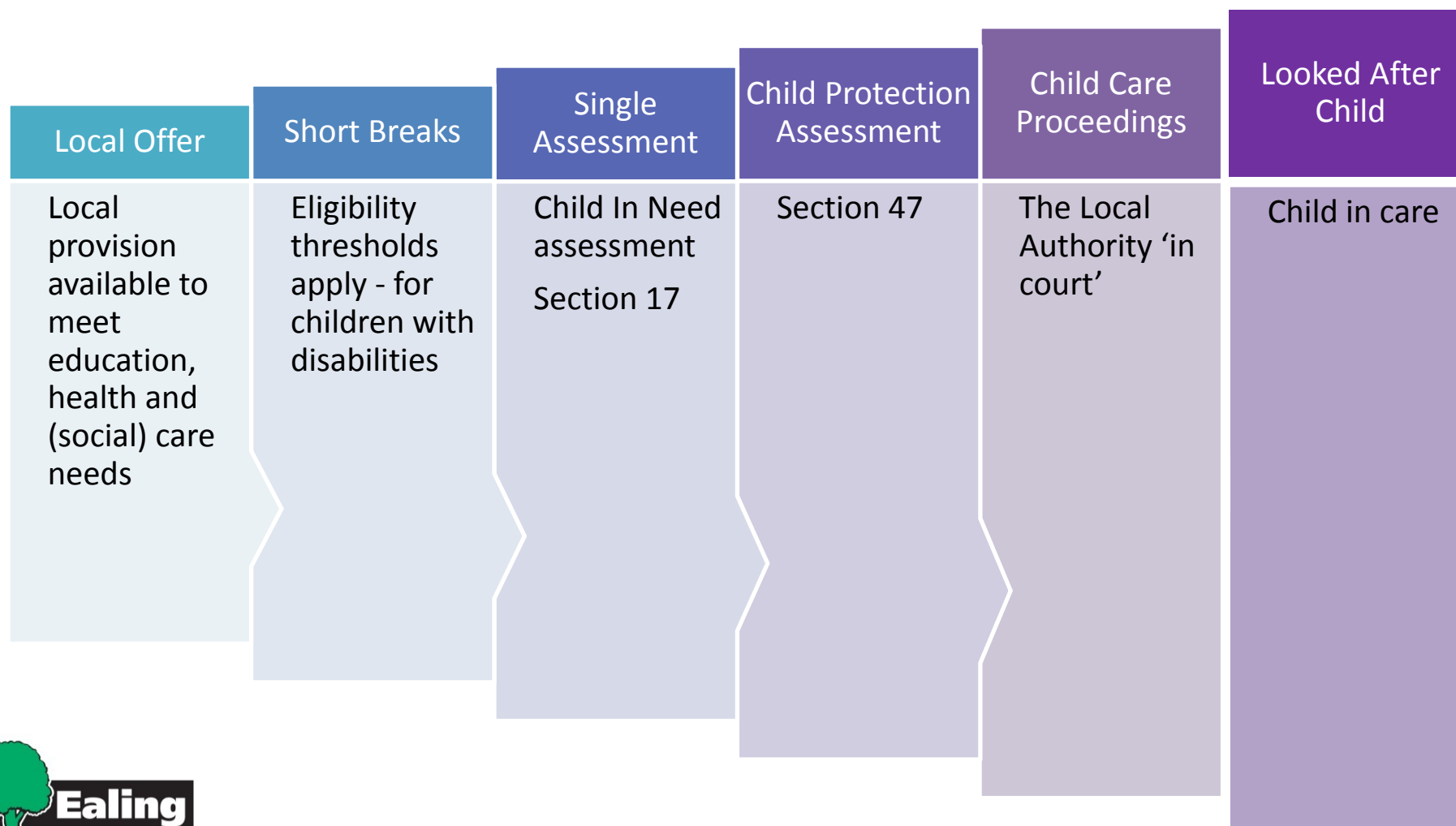
Accountability – Health



Ealing Referral Pathways – Education and social care



Social Care – graduated response



2015

SEN FUNDING

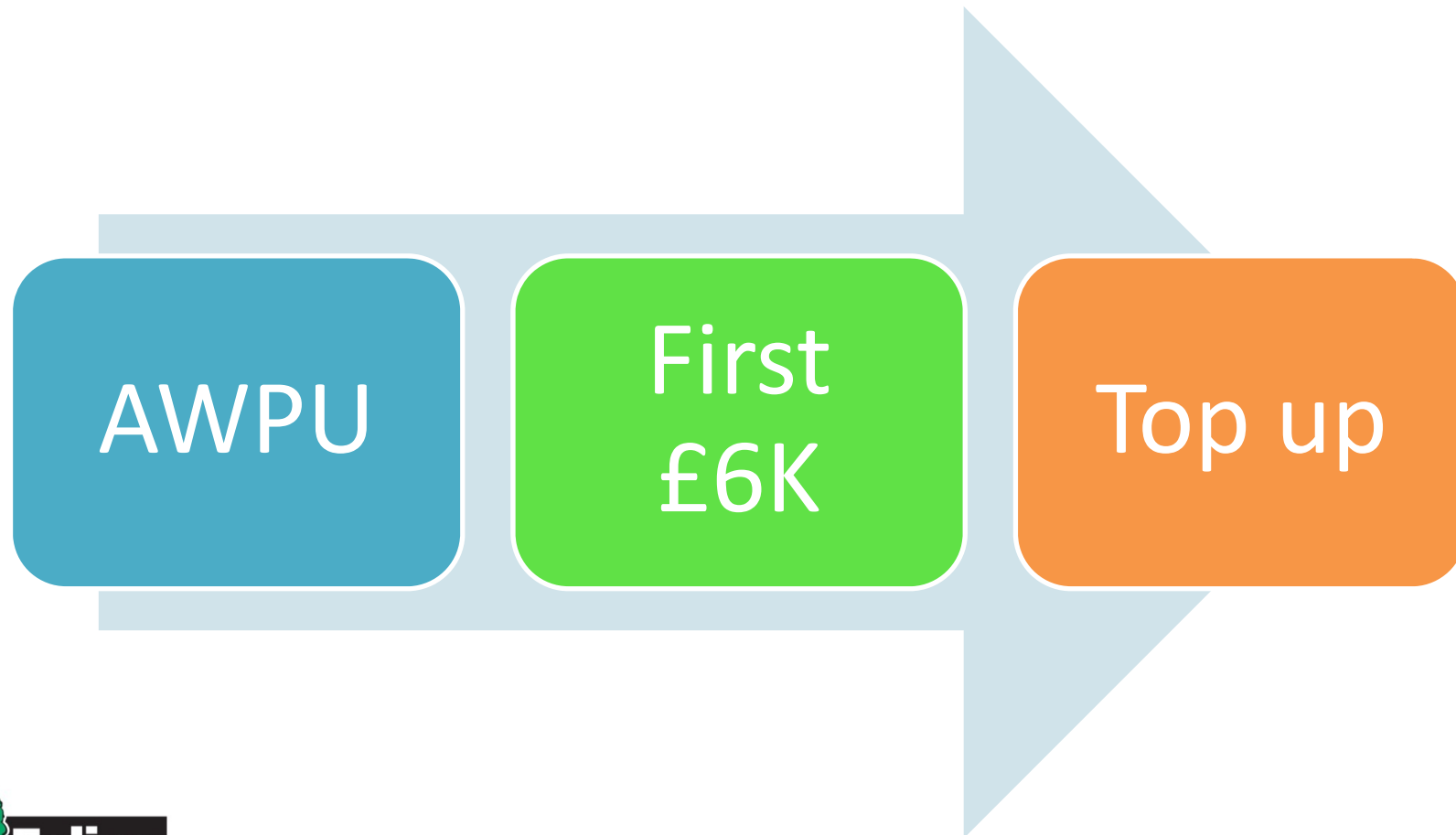
SEN Funding

	Funds held by school		Funds allocated by LA
Mainstream	Age Weighted Pupil Unit £4,000	Delegated funding up to £6,000	Top Up Funding
Special Schools and Additionally Resources Provision	Planned place £10,000 per place		

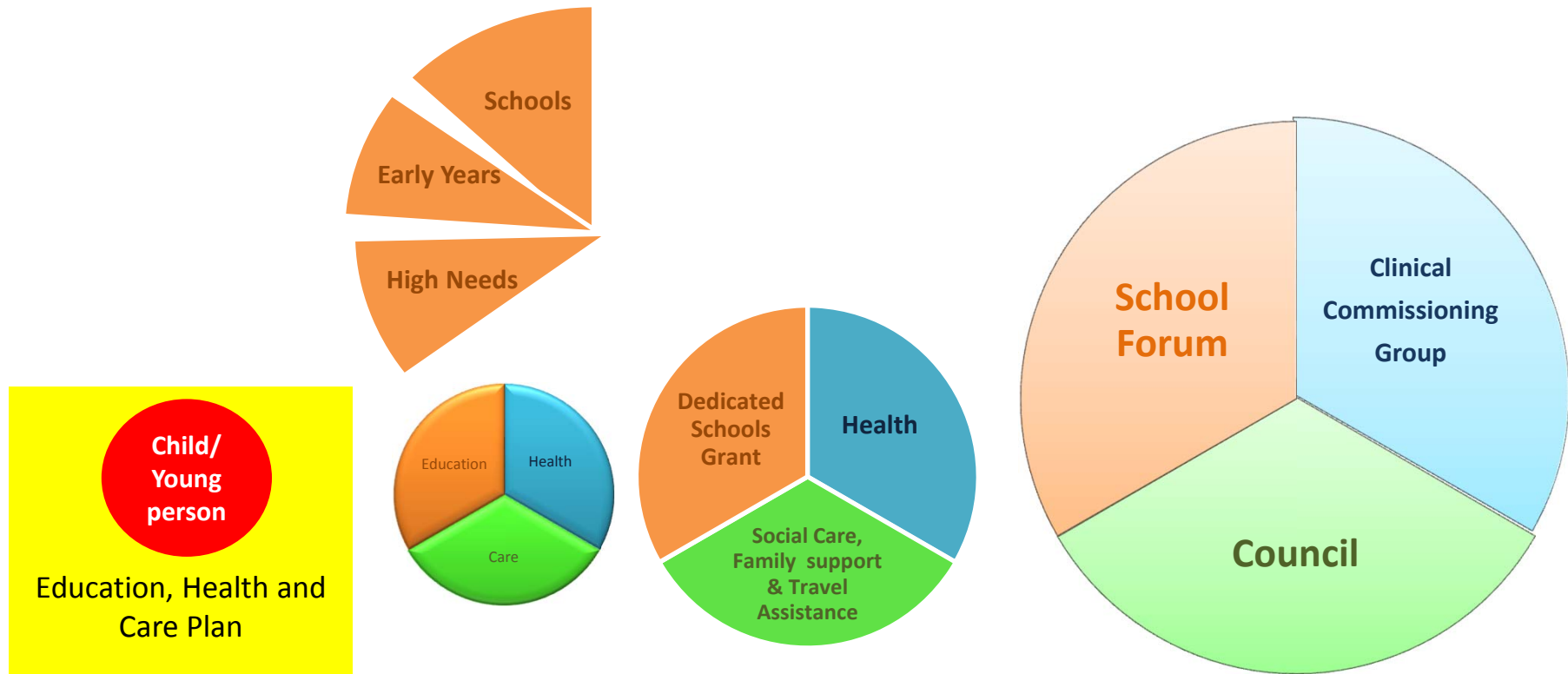


N.B. Additional funds are also provided via the pupil premium (this is additional funding given to publicly funded schools in England to raise the attainment of disadvantaged pupils and close the gap between them and their peers. Pupil premium funding is available to both mainstream and non-mainstream schools, such as special schools and pupil referral units.)

SEN Funding – mainstream schools



Accountability & funding



Current SEN Banding System in Mainstream

SEN Band	Additional High Needs Funding	Baseline	Top Up
		Delegated to school as SEN notional budget	For school to make provision in EHC Plans and Statements
Band A1	£3,369	£6,000	£0
Band A2	£4,118	£6,000	£0
Band A3	£4,866	£6,000	£0
Band A4	£5,616	£6,000	£0
Band B1	£6,364	£6,000	£364
Band B2	£7,112	£6,000	£1,112
Band B3	£7,861	£6,000	£1,861
Band B4	£8,610	£6,000	£2,610
Band B5	£9,358	£6,000	£3,358
Band C1	£10,107	£6,000	£4,107
Band C2	£10,856	£6,000	£4,856
Band C3	£11,604	£6,000	£5,604
Band C4	£12,353	£6,000	£6,353
Band C5	£13,101	£6,000	£7,101
Band D1	£13,850	£6,000	£7,850
Band D2	£14,599	£6,000	£8,599
Band D3	£15,347	£6,000	£9,347
Band D4	£16,096	£6,000	£10,096
Band E	Various	£6,000	Various