

Ealing Council is pleased to offer the Winter Holiday Activities and Food (HAF) programme, funded by the Department for Education to provide free holiday activities for school-aged children (Reception to Y11 academic year 22/23) who are in receipt of benefits-related free school meals. Children must be a resident of Ealing or attend an Ealing school to be eligible.



www.ealingfamiliesdirectory.org.uk

For more information, to speak to someone or if you do not have access to the internet to book please contact:

Ealing's HAF Team
HAF@ealing.gov.uk or call 020 8825 6331
(lines open 9am - 1pm)

Visit our website for more activities and family support services information.

www.ealingfamiliesdirectory.org.uk



Visit our Local Offer for advice and information for children and families with Special Educational Needs and / or a Disability (SEND).

www.ealinglocaloffer.org.uk

Keep up-to-date with news and information for families in Ealing on Facebook.



www.facebook.com/ealingfis
www.facebook.com/ealinglocaloffer



Department for Education

Free Winter 2022 Holiday Activities and Food (HAF) Programme



Fun activities - get creative, make new friends and learn new things.

Children & Families



Ealing's Winter HAF programme brings you a range of free inclusive activities and a healthy meal daily.

Eligible children can attend for a maximum of four hours per day, for four days – you can attend multiple HAF provisions. (Younger siblings of eligible children may be able to attend using the same code if providers are able to accommodate their age range.)

Activities may include:

- Arts and crafts
- Sports
- Outdoor activities
- Drama and music
- Inclusive or specialist SEND provision
- And much more ...



This is your opportunity to:

- Be more active
- Have fun
- Get out and about and meet new people or connect with friends.
- Understand nutrition better
- Find out about local services and how they can help you.



Ealing's Winter HAF programme runs
19th - 23rd December 2022



Visit our website to find:

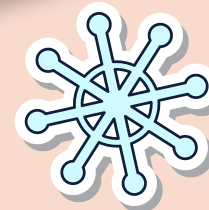
- More activity ideas and resources
- Information on healthy eating, cooking and maintaining a healthy weight.
- Details of key services i.e. employment, financial advice, family support.
- Services for families with children or young people with Special Educational Needs and Disabilities (SEND) and access to Ealing's Local Offer.

To book your place or to find out what is available please click the 'Winter HAF Bookings' link at

www.ealingfamiliesdirectory.org.uk

You will need your school code from the front of this leaflet to book.

Spaces are limited so if you are unable to attend a session, please cancel or amend your booking to enable another family the opportunity to book a place.



www.ealingfamiliesdirectory.org.uk